

Portable Suction System



Features

► All in One, space-saving

Lafil 100 series suction system integrates vacuum sources, waste bottle and suction kit into a system. Saves 65% bench space.

► Ideal for operation in laminar flow

The compact size of Lafil 100 series suction system allows for work in laminar flow. Anti-UV cloth cover is optional.

► Safe and convenient

(1) Fence-like platform design prevents negligence from tipping over the waste bottle.

(2) Syringe filter prevents liquid from overflowing when bottle is full.

(3) Storage rack provides a smart solution for suction adaptors accommodation.

► Eco control feature (Lafil 100^{eco})

Energy-saving Lafil 100^{eco} will stop operating when achieving the maximum vacuum, and resume working when operated again. The pump performance can be fully optimized by reducing electricity consumption and keeping the workplace quiet.

► International certification

CE certification

► One-Year Warranty

Applications

- Cell culture aspiration
- Laboratory waste suction

Ordering Information

197100-01(02)

Lafil 100, Portable Suction System with AC100~240V adaptor, US plug (EU plug)

197110-01(02)

Lafil 100^{eco}, Portable Suction System with AC100~240V adaptor, US plug (EU plug)

197100-03

Lafil 100, Portable Suction System built-in battery with AC100~240V adaptor, US plug

197100-10

1000 ml PP vacuum bottle

197000-60-500

500 ml glass bottle with GL45 suction cap

Lafil 100



* The appearance difference between Lafil 100 / 100^{eco} is switch color.



197100-48 Anti-UV Cloth Cover (Optional)



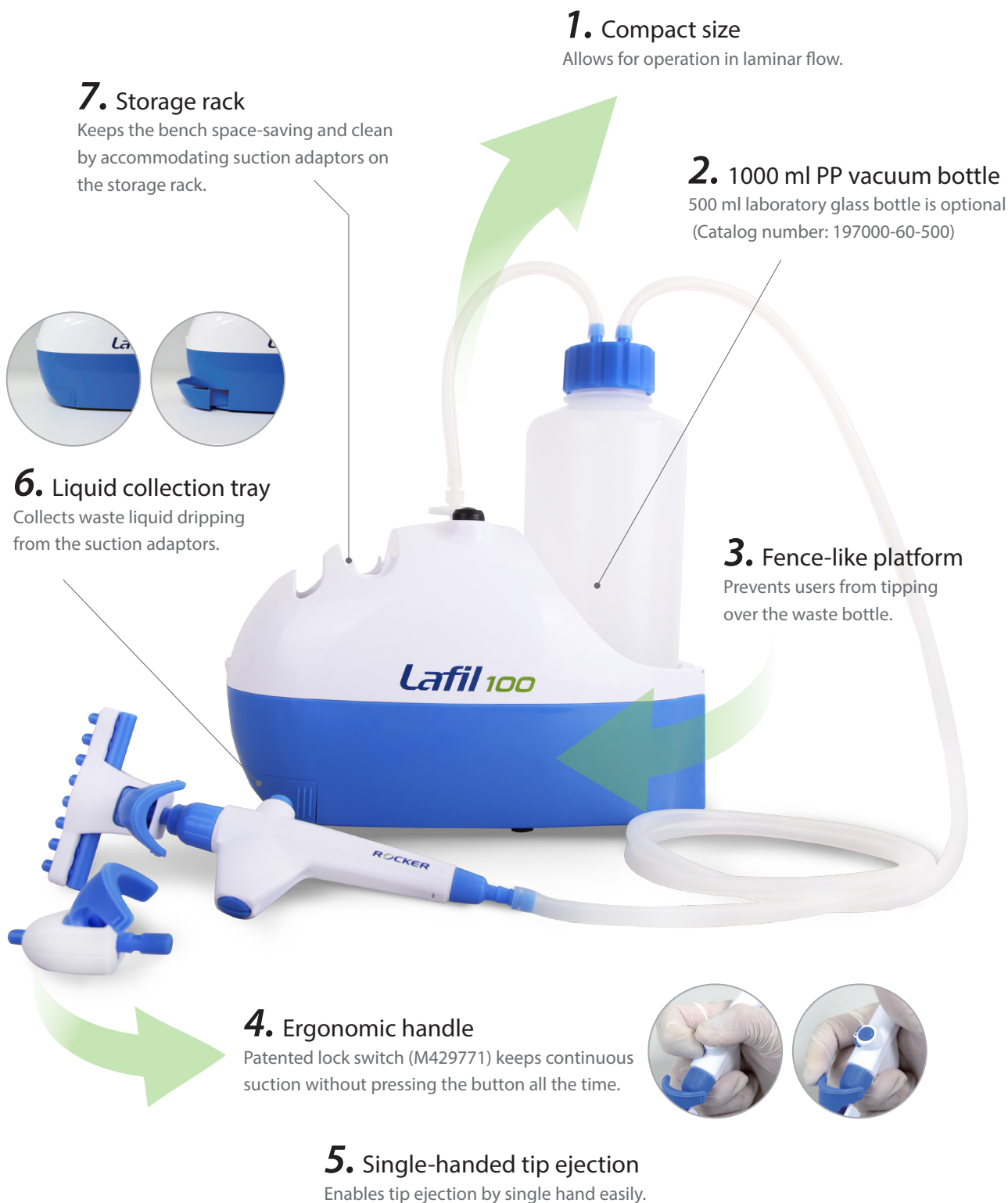
Lafil 100 with 500 ml glass bottle (Optional)

Specification

Model	Lafil 100	Lafil 100 ^{eco}
Power	DC12V, 0.5A	
Max. vacuum	345 mbar	480 mbar*
Max. flow rate	4.0 L/min	
Aspiration rate	9 mL/sec	
Waste bottle	1000 ml PP vacuum bottle / 500 ml glass bottle (optional)	
Auto shut-off	-	Yes
Noise level	50 dB	
Net weight	1.3 Kg	1.5 kg
Dimension (LxWxH)	26.5 x 13 x 28 cm	
Suction Kit	<ul style="list-style-type: none"> • Handle • 1-channel tip adaptor with ejector • 8-channel tip adaptor with ejector 	

* Lafil 100^{eco} is automatically shut off at 480 mbar and restarted at 813 mbar.

Portable Suction System



1. Compact size
Allows for operation in laminar flow.

2. 1000 ml PP vacuum bottle
500 ml laboratory glass bottle is optional
(Catalog number: 197000-60-500)

3. Fence-like platform
Prevents users from tipping over the waste bottle.

4. Ergonomic handle
Patented lock switch (M429771) keeps continuous suction without pressing the button all the time.

5. Single-handed tip ejection
Enables tip ejection by single hand easily.

7. Storage rack
Keeps the bench space-saving and clean by accommodating suction adaptors on the storage rack.

6. Liquid collection tray
Collects waste liquid dripping from the suction adaptors.

The product can be disinfected with 70% Ethanol or isopropanol (IPA).