

SPE-LV6

Compact solid phase extraction system

Make your sample preparation process more reliable and secure

Innovative technology for all applications



Advion Interchim
scientific®

PRESENTATION

Compact solid phase extraction system periods
Make your analytical process more reliable and secure



The SPE-LV6 is a fully automated positive pressure workstation for sample preparation by SPE solid phase extraction. Specially developed for all analytical chemists looking for performance and alternatives to manual use, the SPE LV6 ensures method development and routine applications are executed with ease. Equipped with an innovative and robust technology, the SPE LV6 saves time and increases productivity thanks to the full automated process. The SPE LV6 uses calibrated tubing to grant high reproducibility and efficiency.

Certified LVD & EMC International Directives / CE / UL / CSA
Including national differences for EU Group Differences, USA, Canada



Compatible with :

- SPE columns 1 mL, 3mL, 6mL
- FPLC column 1 mL

APPLICATIONS

- Environmental
(waters, soils, pesticides...)
- Food & Feed
(pesticides, drugs...)
- Biological / Toxicology
(blood, urine, protein & peptide purification...)
- Petrochemical
(Aromatic hydrocarbon...)



BENEFITS FOR YOUR SAMPLE PREPARATION

1. Fully automated system ensures time savings for users during sample preparation
2. Guarantees repeatable results
3. Create your purification methods with flexibility & simplicity
4. Improve your sample purification step
5. Automatic rinsing step avoids cross contamination
6. Innovative & robust technology
7. Plug and play in few minutes
8. Easy to use without specific knowledge
9. Cleaner & safer instrument with solvent waste recovery

SAFER & CLEANER

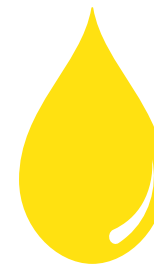
Keeps a cleaner and safer laboratory with solvent waste recovery
Automatic solvent waste separations



Aqueous

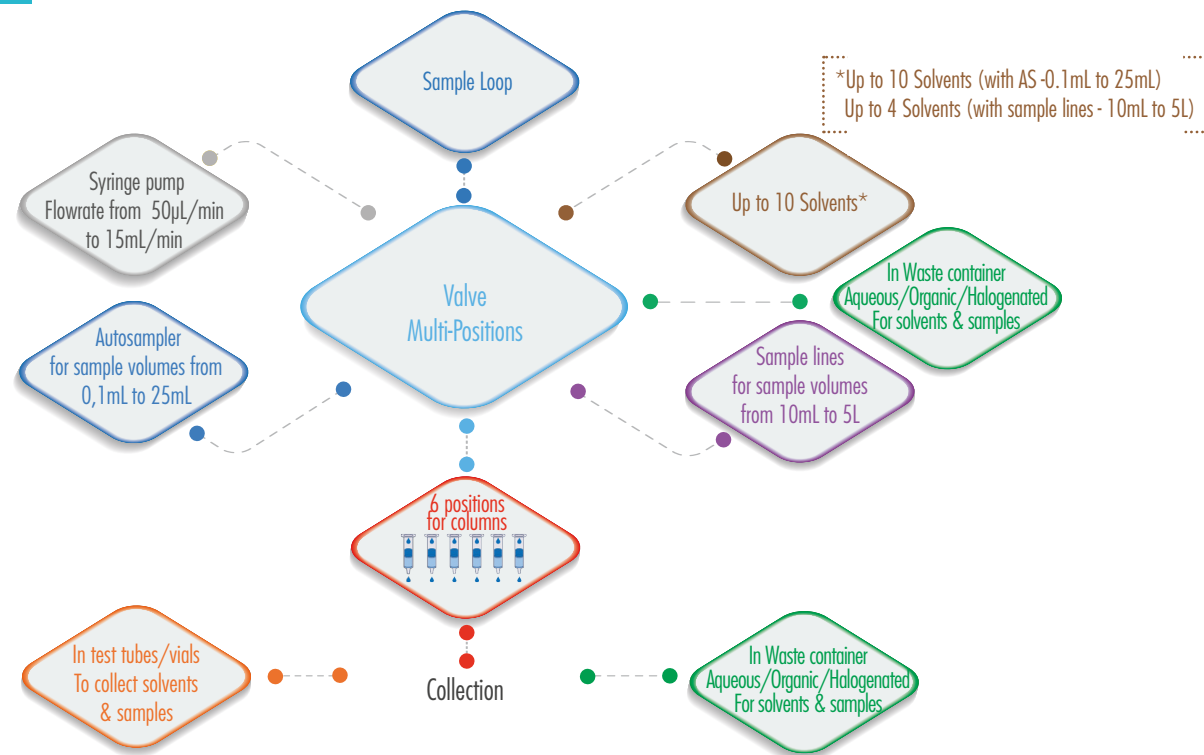


Organic



Halogenated

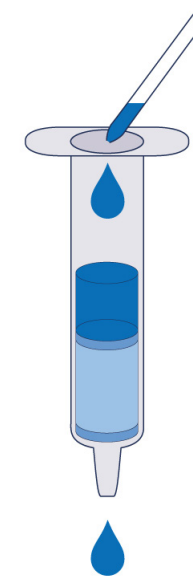




Efficient & repeatable solvent & sample injections



- Constant flow rate from 50µL/min up to 15mL/min
- Increase molecule recovery
- Better separation & retention
- Avoids drying sorbent
- Allows work on resin & ion exchange sorbent



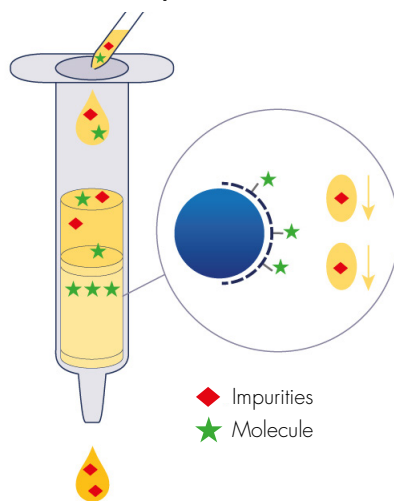
SAMPLE PURIFICATION METHODOLOGY

Removes impurities
Analyse molecule of interest



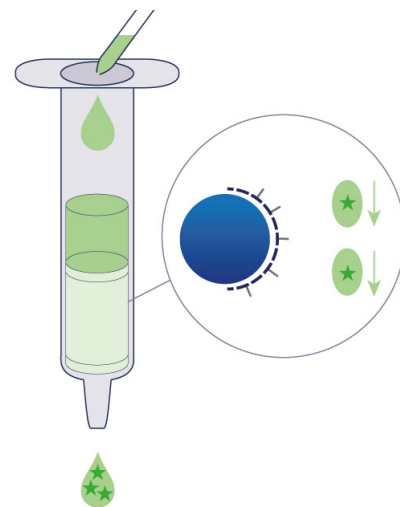
- Impurities
- ◆ Impurities
- ★ Molecule

Load & clean your sample
Isolate your molecule



- ◆ Impurities
- ★ Molecule

Elute your molecule

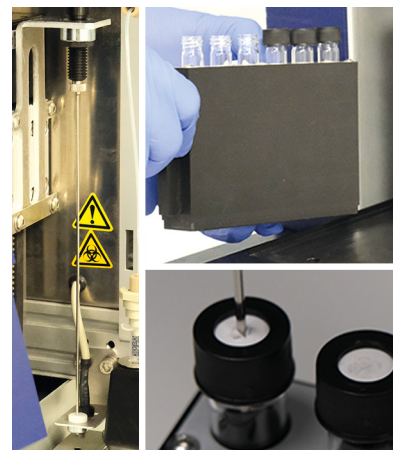


SAMPLE VOLUME RANGE

For small volume
From 0,1 mL Up to 25mL



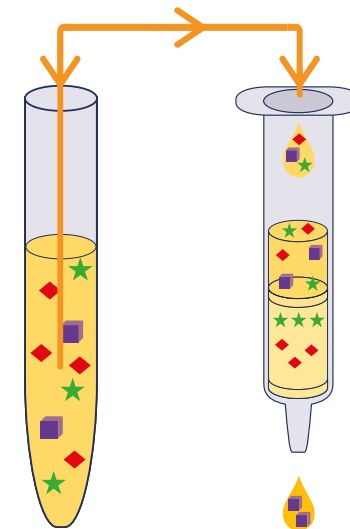
Autosampler
With sample loop



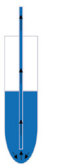

For large volume
From 10mL Up to 5L



Syringe pump

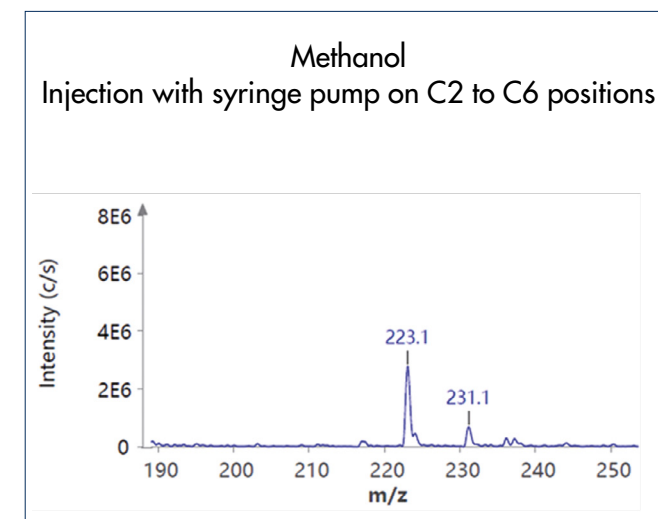
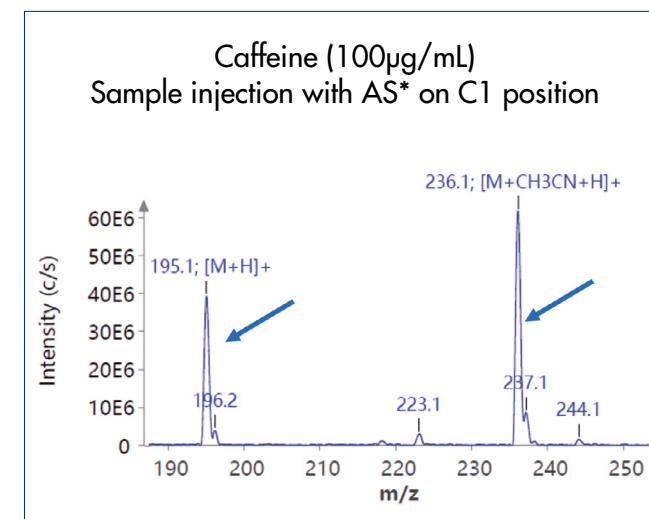


REPRODUCIBILITY

| Injection mode | Autosampler (with needle) + sample loop | | | Large volume (syringe pump) |
|---|---|-----------------------------------|-----------------------------------|----------------------------------|
| Sample volume | 1mL | 3mL | 5mL | 50mL |
| Sampling  RSD (%) Accuracy | 0,33 0,991 ± 0,003mL | 0,04 2,994 ± 0,001mL | 0,04 4,983 ± 0,002mL | X |
| Collection  RSD (%) Accuracy | 0,75 0,96 ± 0,01mL | 0,26 2,89 ± 0,01mL | 0,19 4,82 ± 0,01mL | 0,14 49,67 ± 0,07mL |

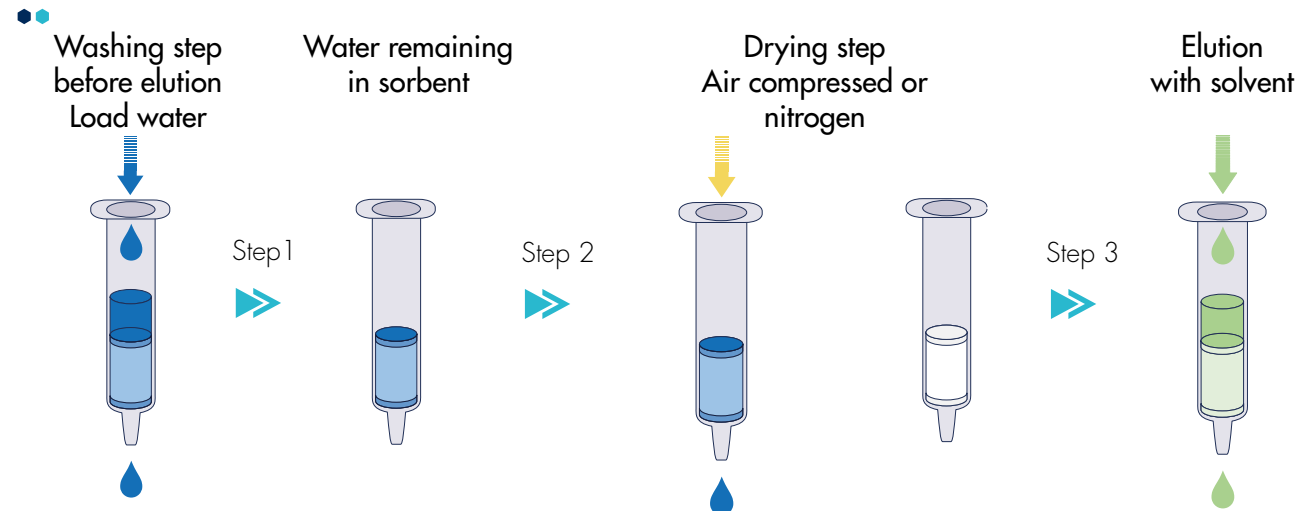
ZERO CROSS CONTAMINATION

Thanks to automatic rinsing steps and dead-volume control



REDUCE CONCENTRATION/ EVAPORATION TIME

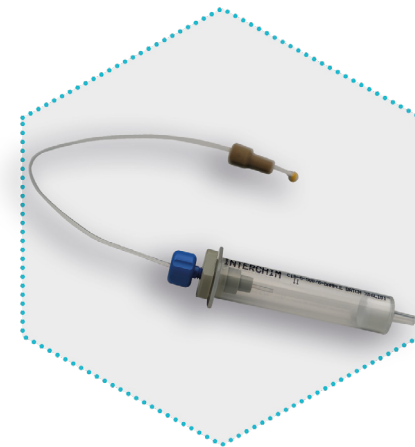
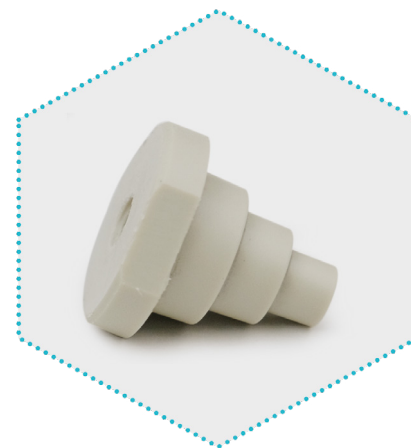
Drying step efficiency up to 92% in 30 seconds



Drying step takes 15 to 30 minutes with a vacuum manifold

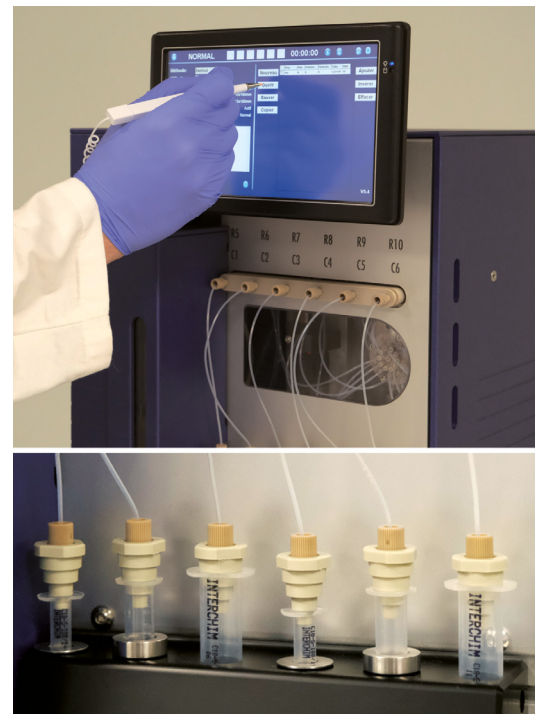
ADAPTER

Universal adapters for SPE columns 1mL, 3mL & 6mL
Creates a perfectly tight seal



INTEGRATED SOFTWARE

- Intuitive software
- 9" touch screen
- Create & Save hundred methods
- Start method in few seconds
- Automated report recording
- Method & data export with USB key
- Offline version to work on a laptop
- Start a run with a mixed column sizes & methods to optimize R&D



COMPACT FOOTPRINTS

Weight : 25kg



Easy to set up

Installation on a bench or fume hood

No technical requirements for the installation



INSTRUMENT & ACCESSORIES - PART NUMBERS

| Part Number | Description | Qty/Pack |
|-------------|--------------------------------------|----------|
| SPE000 | Interchim SPE-IV6 Instrument | 1 |
| SPE010 | Sample Rack 13x100mm, 9mL | 1 |
| SPE020 | Sample Rack 18x150mm, 25mL | 1 |
| SPE030 | Collection Rack Vials 12x32mm, 1.8mL | 1 |
| SPE040 | Collection Rack Vials 12x75mm, 5mL | 1 |
| SPE050 | Collection Rack Vials 13x100mm, 9mL | 1 |
| SPE060 | Collection Rack Vials 16x10mm, 11mL | 1 |
| SPE070 | Collection Rack Vials 18x150mm, 25mL | 1 |
| SPE300 | Collection Rack Vials 28x140mm, 55mL | 1 |



SPE030



SPE050

INSTRUMENT & ACCESSORIES - PART NUMBERS

| Part Number | Description | Qty/Pack |
|-------------|---|----------|
| SPE110 | Insert Adapter SPE Columns, 3mL | 1 |
| SPE120 | Insert Adapter SPE Columns, 1mL | 1 |
| SPE510 | Insert Adapter FPLC Columns, 1mL | 1 |
| SPE520 | SPE Columns 1mL - 3mL - 6mL Adapter, PP | 1 |
| SPE530 | SPE Columns 1mL - 3mL - 6mL Adapter, PEEK | 1 |
| SPE540 | Tubing 23cm Kit for Adapter & FPLC Column | 1 |
| 468452 | Universal PEEK Uptisur fitting 1/16" | 1 |



SPE110



468452



SPE520



SPE540

CANISTERS & GLASSWARES - PART NUMBERS

| Part Number | Description | Qty/Pack |
|----------------------------|---|----------|
| CLEAR GLASS BOTTLES | | |
| B689C0 | Bottle GL45, 100mL Clear Glass Duran Graduated with screw Cap and Pouring Ring PP | 10 |
| B689C1 | Bottle GL45, 100mL Clear Glass Duran Graduated with screw Cap and Pouring Ring PP | 1 |
| B689E0 | Bottle GL45, 150mL Clear Glass Duran Graduated with screw Cap and Pouring Ring PP | 10 |
| B689E1 | Bottle GL45, 150mL Clear Glass Duran Graduated with screw Cap and Pouring Ring PP | 1 |
| BV2762 | Bottle GL45, 250mL Clear Glass Duran Round | 10 |
| BV2761 | Bottle GL45, 250mL Clear Glass Duran Round | 1 |
| HP6192 | Bottle GL45, 500mL Clear Glass Duran Round | 10 |
| HP6191 | Bottle GL45, 500mL Clear Glass Duran Round | 1 |
| B4PQA1 | Bottle GL45, 3500mL Clear Glass Duran Round | 1 |
| HP6165 | Bottle GL45, 1L Clear Glass Duran Round | 1 |
| HP6201 | Bottle GL45, 2L Clear Glass Duran Round | 1 |
| B4PQA1 | Bottle GL45, 3500mL Clear Glass Duran Round | 1 |
| JJ6915 | Bottle GL45, 5L Clear Glass Duran Round | 1 |
| JM5535 | Bottle GL45, 10L Clear Glass Duran Round | 1 |
| B689V0 | Bottle GL45, 15L Clear Glass Duran Graduated with screw Cap and Pouring Ring PP | 1 |
| B689X0 | Bottle GL45, 20L Clear Glass Duran Graduated with screw Cap and Pouring Ring PP | 1 |
| CANISTER PE-HD | | |
| | Interchim SPE-IV6, Canister PE-HD S60/61, 5L | 1 |
| | Interchim SPE-IV6, Canister PE-HD S60/61, 12L | 1 |
| | Interchim SPE-IV6, Canister PE-HD S60/61, 20L | 1 |
| | Interchim SPE-IV6, Canister PE-HD S60/61, 30L | 1 |



TEST TUBES - PART NUMBERS

| Part Number | Description | Qty/Pack |
|------------------------------|--|----------|
| TEST TUBES & CAPS | | |
| AXETN5 | Test Tubes, 12,00x75mm Borosilicate Glass EXP51, 6mL Without RIM - Round Bottom - 0,5-0,6mm | 4 x 250 |
| AXETO5 | Test Tubes, 13,00x100mm Borosilicate Glass EXP51, 10mL Without RIM - Round Bottom - 0,5-0,6mm | 4 x 250 |
| AXETP5 | Test Tubes, 16,00x100mm Borosilicate Glass EXP51, 5mL Without RIM - Round Bottom - 0,5-0,6mm | 4 x 250 |
| AXETT5 | Test Tubes, 18,00x150mm Borosilicate Glass EXP51, 28,5mL Without RIM - Round Bottom - 0.8mm | 2 x 250 |
| 341651 | 10mL Screw Vials, 13mm Iear Glass 13x100mm Rounded Bottom (For Sample Rack SPE010) | 1 x 125 |
| BF2240 | 13mm Screw Caps White Silicone/REDPTFE 1.5mm - Cross Slit (For Sample Rack SPE010 & Test Tubes 341652) | 1 x 100 |
| ARX3CO | Culture Tubes, 13,00x100mm Borosilicate Glass EXP51, 10mL 13-415 - Round Bottom - 0.9mm | 4 x 250 |



BF2240



AXETO5

ARX3LO



Advion Interchim

scientific®

How to request more information, a quotation or to place an order

Please see from the list below:



E-mail

info.EU@advion-interchim.com
quotes.EU@advion-interchim.com
orders.EU@advion-interchim.com

Online

www.advion-interchim.com

Phone

+33 4 70 03 88 55

**All your orders will be recorded
& processed as quickly as possible.**

**You need technical assistance?
Our scientific experts are here to help.**

instrumentation@advion-interchim.com

Advion Interchim Scientific is the market-facing name of a partnership between Advion, Inc. and Interchim SAS, separate companies that have agreed to market and distribute their products together. All registered and trademark belong to their respective owners. Non-contractual pictures.