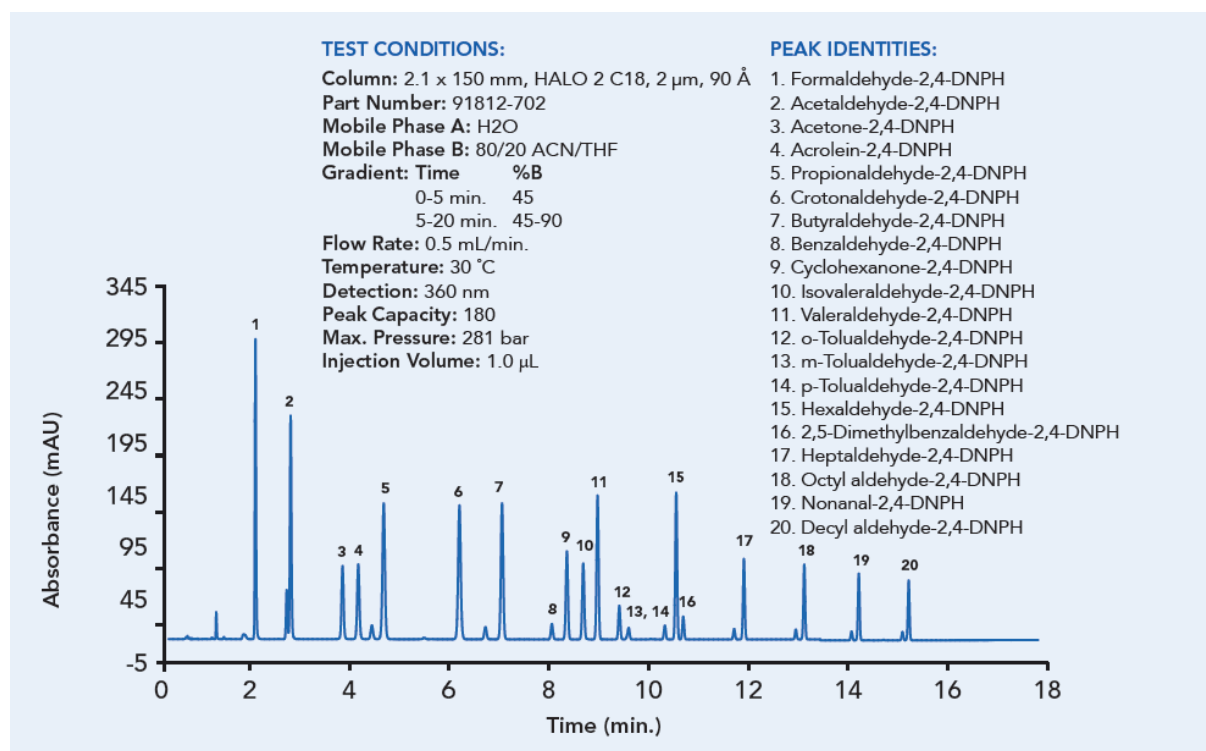
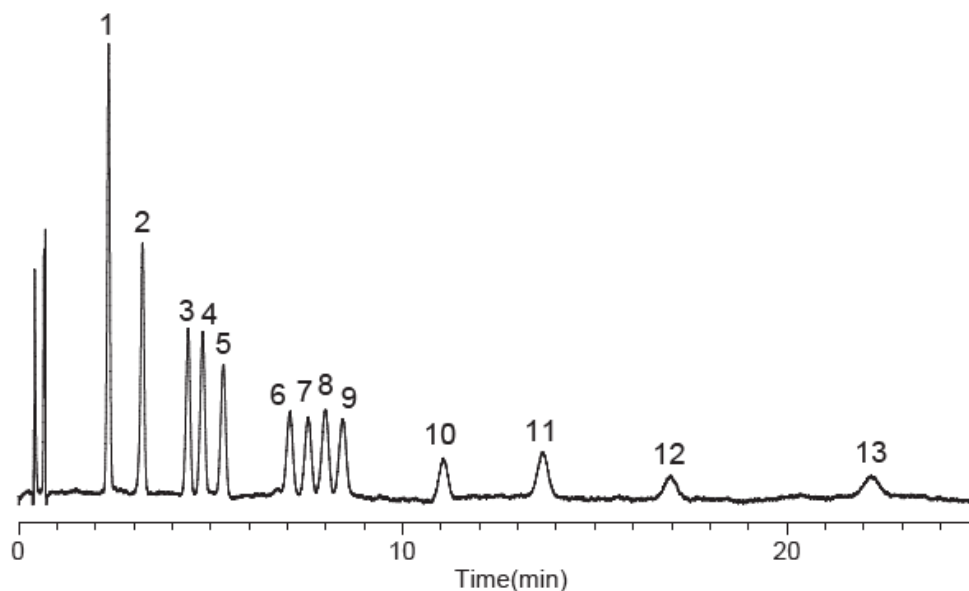


## DNPH derivatives of aldehydes and ketones

Column: HALO C18, 150 x 2.1mm x 2µm (P/N: 91812-702)



Column: InertSustain C18 HP, 150 x 3.0mm x 3µm (P/N: 5020-14425)



### Conditions

Column : InertSustain C18 HP  
(3 µm, 150 × 3.0 mm I.D.)

Eluent : A) CH<sub>3</sub>CN  
 B) H<sub>2</sub>O  
 C) THF  
 A/B/C = 35/55/10, v/v/v

Flow Rate : 1.5 mL/min

Col. Temp. : 40 °C

Detection : UV 360 nm

Injection Vol. : 10 µL

Data Source : LC InertSearch No. LA962

Sample :

- |                           |                          |
|---------------------------|--------------------------|
| 1. DNPH-Formaldehyde      | 8. DNPH-Methacrolein     |
| 2. DNPH-Acetaldehyde      | 9. DNPH-n-Butyraldehyde  |
| 3. DNPH-Acetone           | 10. DNPH-Benzaldehyde    |
| 4. DNPH-Acrolein          | 11. DNPH-n-Valeraldehyde |
| 5. DNPH-Propionaldehyde   | 12. DNPH-m-Tolualdehyde  |
| 6. DNPH-Crotonaldehyde    | 13. DNPH-Hexanal         |
| 7. DNPH-Methylethylketone | (150 µg/L each)          |