



**3-HYDROXY LIDOCAINE, 4-HYDROXY GUANABENZ, 4-HYDROXY MEPIVICANE, 4-HYDROXY XYLAZINE, DETOMIDINE, AND O-DESMETHYL TRAMADOL IN EQUINE URINE BY LC/MS**

Part #

XRDAH206 - XtrackT® DAU 200 mg, 6 mL Tube

SPPH06001-10 - Select pH Buffer Pouches 100mM Phosphate pH 6.0

**1. PREPARE SAMPLE:**

To 1 mL of 100 mM phosphate buffer (pH= 6) add 2 mL of Urine add Internal standards. Add 3 mL of 100 mM phosphate buffer Mix/vortex.

Centrifuge as appropriate

**2. CONDITION XTRACKT® DAU EXTRACTION COLUMN:**

1 x 3 mL CH<sub>3</sub>OH

1 x 3 mL D.I. H<sub>2</sub>O

1 x 3 mL 100 mM phosphate buffer (pH= 6)

NOTE: Aspirate at full vacuum or pressure

**3. APPLY SAMPLE:**

Load at 1 to 2 mL/minute

**4. WASH COLUMN:**

1 x 3 mL D.I. H<sub>2</sub>O

1 x 3 mL Methanol containing 2% glacial acetic acid

Dry column (5 minutes at full vacuum or pressure)

**5. ELUTE:**

1 x 3 mL CH<sub>2</sub>Cl<sub>2</sub>/ IPA/ NH<sub>4</sub>OH (78: 20: 2 v/v)

Collect the eluate at 1-2 mL minute (or gravity)

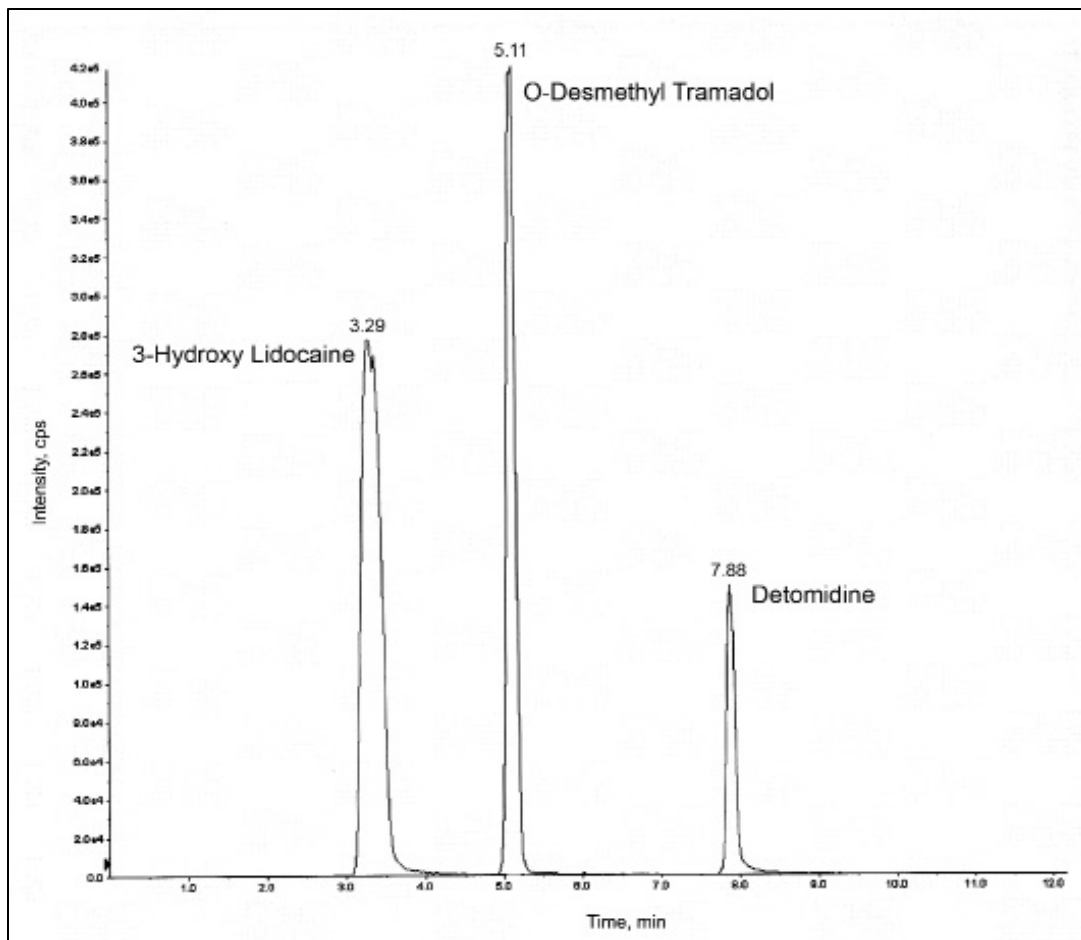
NOTE: Prepare elution solvent daily

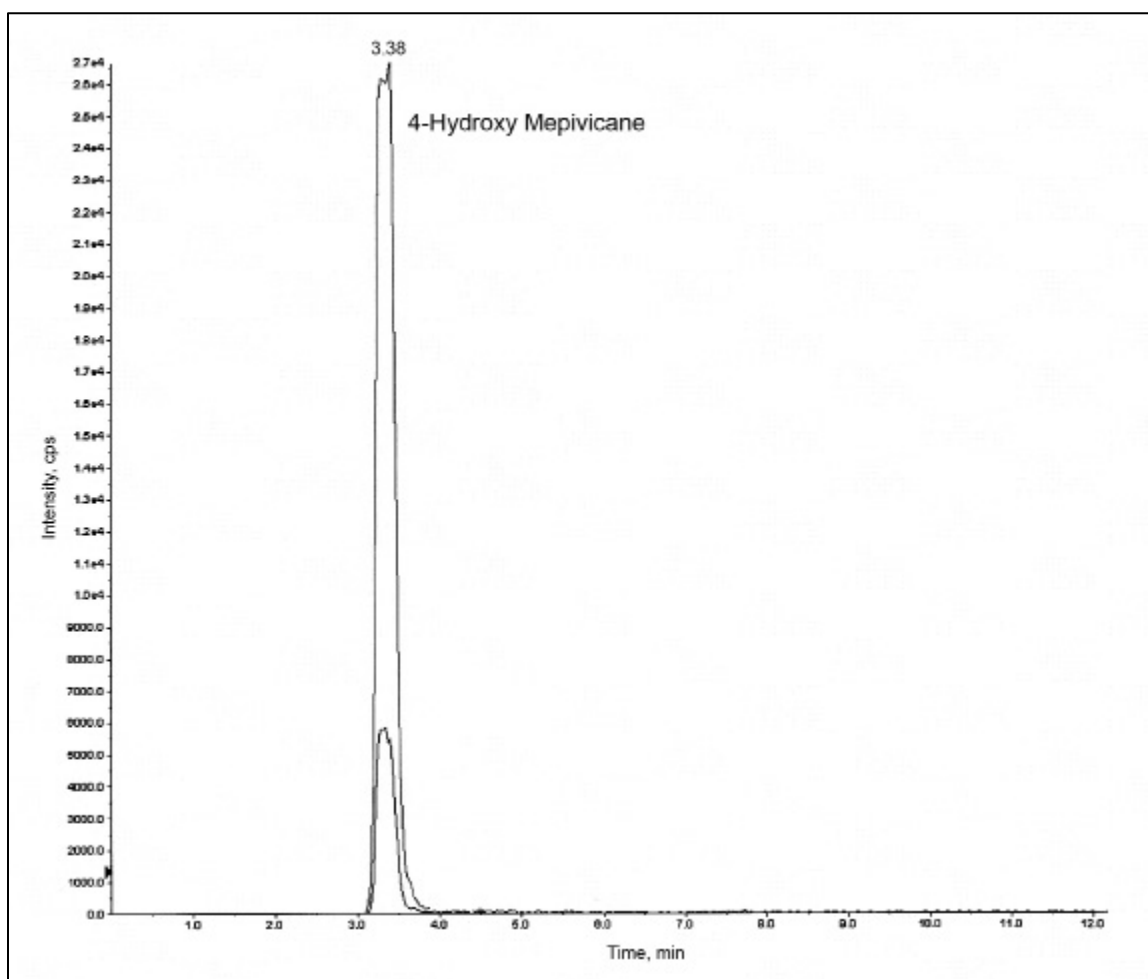
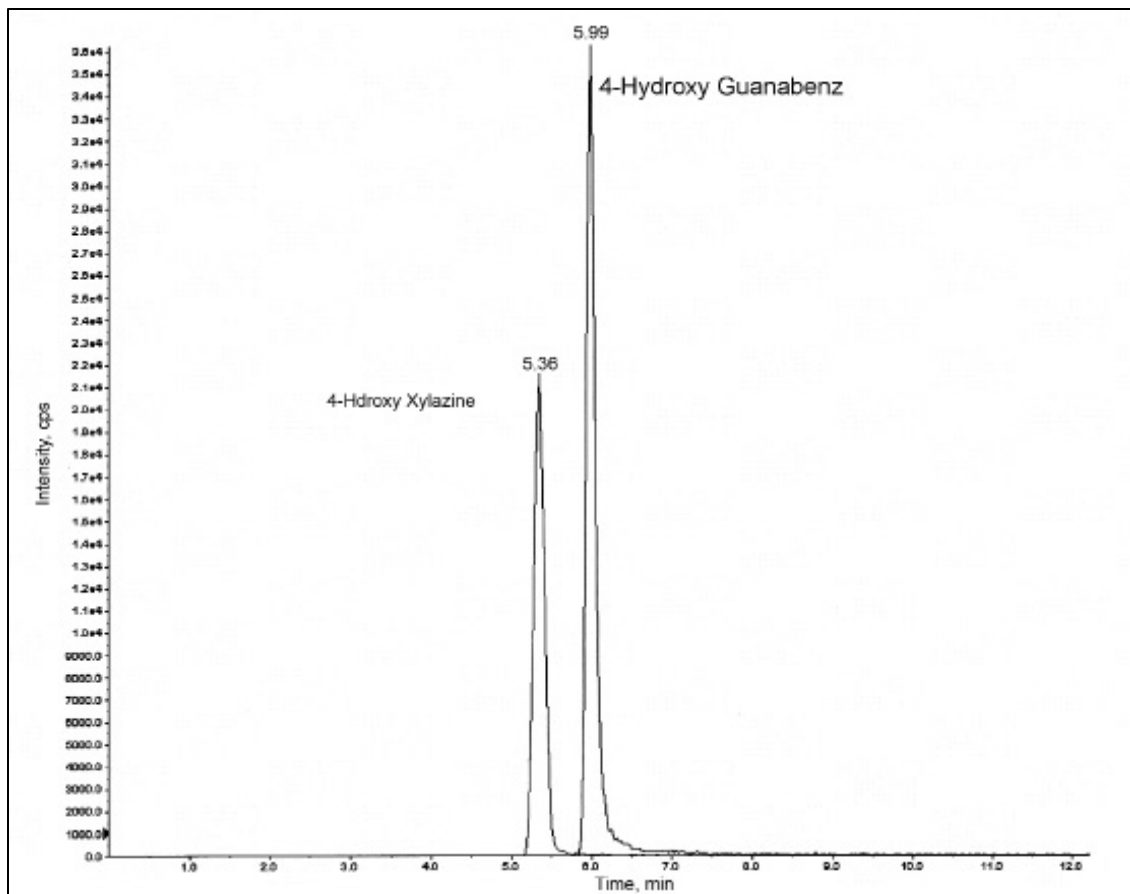
**6. DRY ELUATE:**

Evaporate to dryness at < 40°C

**7. ANALYSIS:**

Inject 10 µL sample





Compound	RT	Precursor Ion	Product Ion
3-Hydroxy Lidocaine	3.29	251.5	86.0
4-Hydroxy Mepivicane	3.38	264.1	98.1
O-Desmethyl Tramadol	5.11	250.4	58.0
4-Hydroxy Xylazine	5.36	237.9	137.0
4-Hydroxy Guanabenz	5.99	248.9	189.9
Detomidine	7.88	188.1	81.0